

## YOUR GUIDE TO PROPER MAINTENANCE OF BUCKINGHAM POLE CLIMBERS

**Warning:** Do not use this product if you cannot understand and follow the instructions and warnings that come with it and complete all necessary functions. Please consult with your physician prior to using this product. Do not use this product under the influence of drugs or alcohol.

Your new Buckingham Pole Climbers have been designed and manufactured to provide you with security and comfort while you are climbing and working on utility poles. The gaffs are machined to very close tolerances and the tips have the proper radius to ensure pole penetration.

It is **YOUR** responsibility to maintain your climbers properly. The Buckingham Gaff and Stirrup Gauges outlined below when properly used will aid you in this maintenance.

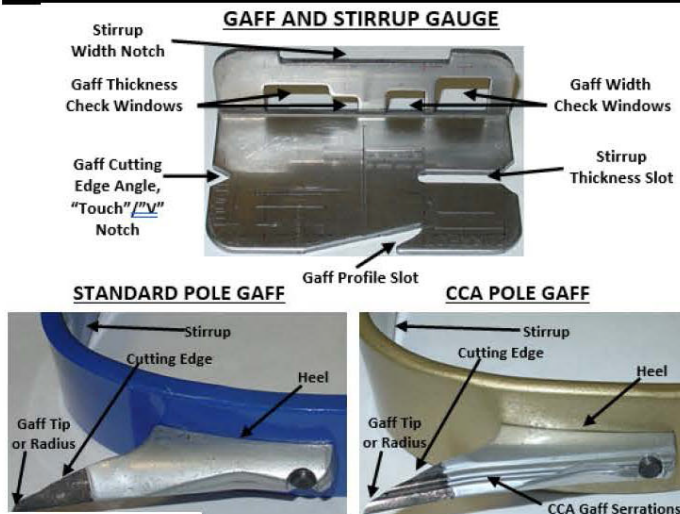
- Use PN 6303 Gaff Gauge for all pole climbers with standard and CCA Gaffs.

In normal use, your gaffs will need only honing to retain their cutting edges. We suggest use of Buckingham Hone PN 6501.

If your gaffs are nicked or otherwise damaged from contact with pole hardware, or have been severely worn, they may need re-shaping beyond the capabilities of the hone. We then recommend careful use of a smooth, single-cut file such as Buckingham No. 6058 included in our Gaff Shaping Kits outlined below.

- Gaff Shaping Kit PN 6025 includes Gauge PN 6303, Hone PN 6501, and Smooth File PN 6058 (For use with all pole climbers with standard and CCA Gaffs).

The kit includes complete illustrated guidance on Proper Climber Maintenance. Maintenance steps are described and illustrated to show "PROPER" conditions and those considered "UNSAFE". READ and FOLLOW these GUIDES to maintain your climbers.



PART # 230149  
6303Series.PUB  
(Rev. 8/16/24)

## USING THE 6303 GAFF & STIRRUP GAUGE

STEP 1

PROPER



STEP 2

PROPER



STEP 3

PROPER



STEP 4

PROPER



### STIRRUP WIDTH

If, at any point, the stirrup fits flat between the notch shoulders, then the climber is too worn to be used safely.

Note: This requirement is not pertinent to the narrow stirrup climber as the minimum width of this stirrup is 31/32". Therefore, do not use this type of climber if the width is less than 31/32".

### STIRRUP THICKNESS

If at any point along either edge, the stirrup portion of the climber fits into the Stirrup Thickness Slot, the climber is too worn to be used safely.

### GAFF LENGTH

Minimum safe length for pole gaff climbing is 1 1/4". This is measured on the flat underside of the gaff. Gaffs shorter than 1 1/4" are too worn to be used safely.

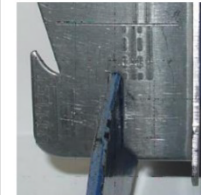
### TIP PROFILE

Gaff profile slot marked "CORRECT" should be your guide to proper shaping of the gaff tip. A fit with the tip radius CLOSELY matching that of the slot may be considered proper. A gaff tip that fits loosely and ends in a sharp point without the radius is unsafe for climbing. Such a gaff should be re-shaped gradually, as shown in step 8. After re-shaping to fit the "CORRECT" slot, Step 3 and all following steps should be re-checked.

UNSAFE



UNSAFE



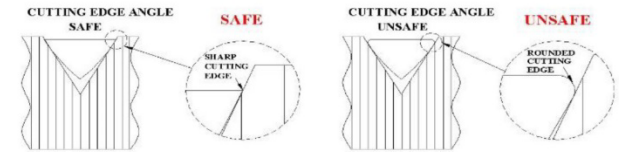
UNSAFE



UNSAFE



STEP 5



From the tip of the gaff to approximately one-quarter inch, only the cutting edge should touch the sides of the "Touch"/"V" Notch as the gaff tip is passed through it.

STEP 6

### GAFF WIDTH

PROPER STANDARD GAFF

PROPER CCA GAFF

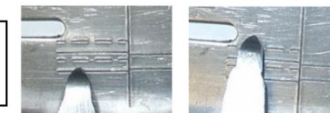


STANDARD GAFF - TOO WIDE - TOO NARROW - TOO THICK - TOO THIN



### CCA GAFF WIDTH

CCA GAFF - TOO WIDE



CCA GAFF - TOO NARROW

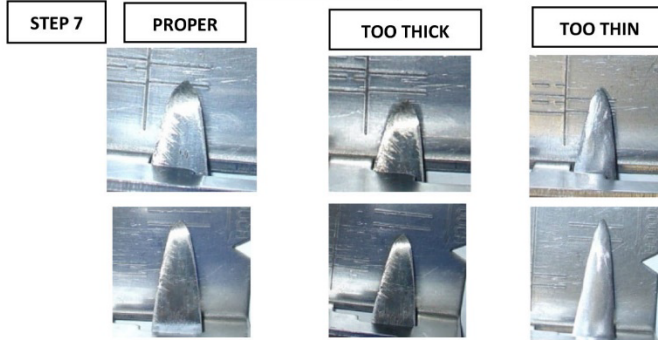
Use DASHED lines Use DASHED lines

**Note:** When checking a CCA pole gaff for the 1/2" width dimension, (smaller of two width windows) the gaff tip should fit between the dashed inscribed guide lines on the gauge. All other windows/steps are to be used for both CCA & Standard pole gaff inspections. If the gaff tip, when inserted through each Width Check Window, fails to fit between the inscribed guide lines on the gauge, the gaff is either: Too wide or too narrow. Follow the steps below to re-shape the gaff to achieve optimum gaff penetration. The top of the stirrup thickness slot is to be used as the bottom inscribed guide line for the 1" width window.

A. Too Wide (fails to reach the correct zone) or, B. Too Narrow (reaches beyond the correct zone)  
To correct A, file the inside flat surface evenly until the tip fits within the zone.  
To correct B, file the gaff tip or radius until the tip fits within the zone.  
Steps 3 through 6 should be rechecked after correcting the gaff width.

**Note:** Some new gaffs may fall up to approximately 1/16" short of the minimum thickness line due to powder coating. When the gaffs are used and the powder coat wears off, the gaffs should fall at or above the lines.

## THICKNESS



If the gaff tip, when inserted through each of the Thickness Check Steps, fails to fit between the inscribed lines on the gauge, the gaff is either: Too thick or thin. Follow the steps below to reshape the gaff to achieve optimum gaff penetration.

A. Too Thick (fails to reach the correct zone) or, B. Too Thin (reaches beyond the correct zone).

To correct A, carefully file the inside flat surface of gaff to reduce thickness to allow the point to fit into correct zone.

To correct B, file the gaff tip or radius until the tip fits into correct zone.

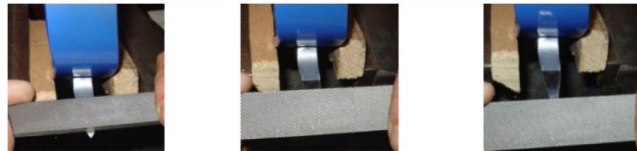
Steps 3 through 7 should be rechecked after gaff thickness has been corrected.

## STEP 8

### RESHAPING INSTRUCTIONS

If your gaffs need filing to restore them from damage or major wear, place in a vise as shown, cushioned by blocks of wood to avoid scarring the leg iron. Use only a smooth, single-cut file such as Buckingham PN 6058. Use light strokes from heel to tip being careful not to scar the leg iron at the heel junction. Keep file flat on the gaff and clean file frequently. Gauge your progress frequently being careful not to remove too much metal.

Correct filing action is a smooth "over-and-down" motion as shown.



Keep file flat, push away from the gaff heel toward the tip and roll the file "over-and-down" at the tip to maintain proper tip radius. This radius is the **KEY** to proper pole penetration. It forces the gaff deeper into the pole with less effort. Gauge your work frequently. Touch up with the hone PN 6501 and climb with assurance.

Information contained in these written instructions supersedes all other information (written, audio, video etc.) produced by Buckingham Mfg. prior to the revision date of this document.

PART # 230149  
6303Series.PUB  
(Rev. 8/16/24)

## STATEMENT of OBSOLESCENCE:

Precise "useful life expectancy" or "shelf life" for this product is not specified, as the degree of use, conditions of use, and the degree of care and storage determines useful life. All users maintain responsibility to select proper equipment for the job, be properly trained in its use, and ensure all personnel support equipment passes inspection before each use. Upon evidence of defects, damage or deterioration, all equipment shall be removed from service immediately and tagged or marked as unusable or destroyed. Additionally, all equipment shall be inspected on a regular basis not to exceed one year by a Competent Person, as defined by OSHA/ANSI, to verify that the equipment is safe for use. In the event of any question or concern regarding the condition of such equipment, users shall remove the equipment from service for further inspection. All users must comply with OSHA/ANSI/ASTM standards prior to and in using such equipment. For more information regarding safe and appropriate use of equipment, please contact Buckingham Manufacturing at 1-800-937-2825.

## INTERNATIONAL USERS:

Notwithstanding the above, please know that certain international jurisdictions require manufacturers of equipment to provide customers with a maximum useful lifespan (sometimes referred to as a "Statement of Obsolescence"). To the extent required, Buckingham personal protective equipment manufactured from synthetic fiber materials including but not limited to items such as webbing and/or rope are subject to a maximum useful lifespan of ten (10) years from the date of manufacture. As stated above proper usage, storage, maintenance, and care impacts the useful lifespan of equipment. Extreme circumstances may require that product must be retired after only one use. This statement is made in conformance and compliance with BS EN 365:2004. International users must ensure that product inspections are completed by Competent Persons as defined by international standards including but not limited to British Standard ("BS"). If equipment fails any inspections, it must be immediately withdrawn from service and destroyed. For more information regarding safe and appropriate use of equipment, please contact Buckingham Manufacturing at 1-800-937-2825.

## OUR GUARANTEE:

We guarantee the equipment we manufacture to be free from defects in material and workmanship. We will repair any equipment deemed to be defective which is returned to us by the original purchaser. However, this guarantee is void if any product is changed or altered in any way, or if the product is used in a manner other than for which it is intended. This express guarantee supersedes all other expressed or implied guarantees, obligations or liabilities. THERE ARE NO IMPLIED WARRANTIES OF MERCHANTABILITY OR FITNESS FOR A PARTICULAR PURPOSE AND AS SUCH, ALL IMPLIED WARRANTIES ARE SPECIFICALLY DISCLAIMED.

## LIMITATION ON LIABILITY:

IN NO EVENT WILL BUCKINGHAM OR BUYER BE LIABLE TO THE OTHER FOR LOST REVENUES, LOST PROFITS OR ANY OTHER INDIRECT, CONSEQUENTIAL, SPECIAL OR PUNITIVE LOSSES OR DAMAGES, HOWEVER CAUSED, WHETHER IN ACTION FOR BREACH OF CONTRACT, STRICT LIABILITY, TORT, OR OTHERWISE, EVEN IF ADVISED OF THE POSSIBILITY OF SUCH LOSSES OR DAMAGES. IN NO EVENT WILL BUCKINGHAM'S LIABILITY EXCEED THE TOTAL AMOUNT PAID BY BUYER TO BUCKINGHAM FOR THE PRODUCT OR EQUIPMENT GIVING RISE TO SUCH CLAIM(S).

PLEASE SEE OTHER TERMS AND CONDITIONS RELATING TO THIS PRODUCT AT <https://buckinghammfg.com/terms-conditions/>

REGISTRATION: Before use of the product, ensure to register and confirm the product at [www.buckinghammfg.com/register](http://www.buckinghammfg.com/register).

SCAN FOR CLIMBER INSPECTION & MAINTENANCE VIDEO



## YOUR GUIDE TO PROPER MAINTENANCE OF BUCKINGHAM POLE CLIMBERS



**BUCKINGHAM MFG.**

BINGHAMTON, NY

1-800-937-2825

[www.buckinghammfg.com](http://www.buckinghammfg.com)